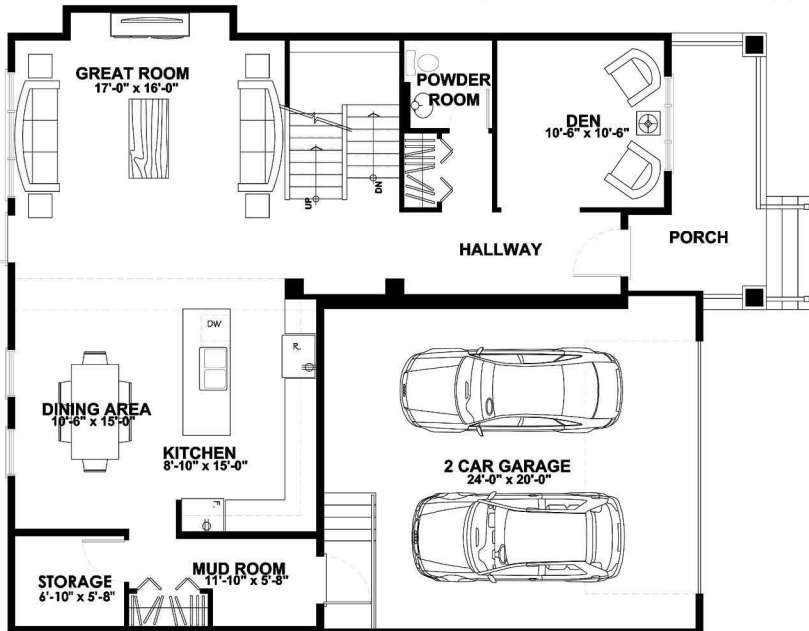


SECOND FLOOR 1,047sqf



MAIN FLOOR 1,119sqf

TWO STOREY, 2,166 SQ FT

4 bedroom - 2.5 bathroom - 2 car garage

- Stucco exterior with Hardie shake accents
- Covered concrete porch with maintenance free metal railings
- Choice of Prairiestone, Barkman Stone, or Sunset Stone on exterior
- Choice of Maple, Oak or White Thermofoil cabinetry throughout
 - Kitchen island with raised serving ledge
- Double sinks in Ensuite with large walk in closet
 - All main floor ceilings are 9'
 - Convenient main floor laundry
- Steel beams in basement reduce teleposts required



MANITOBA
HOME BUILDERS'
ASSOCIATION



The Grandin A

The above image is an artist's rendition. Some features illustrated here may not be included in the base price of the home.

© 2012 Discovery Homes. Actual plan may vary from brochure. Dimensions shown are approximate and subject to change without notice. All rights reserved.