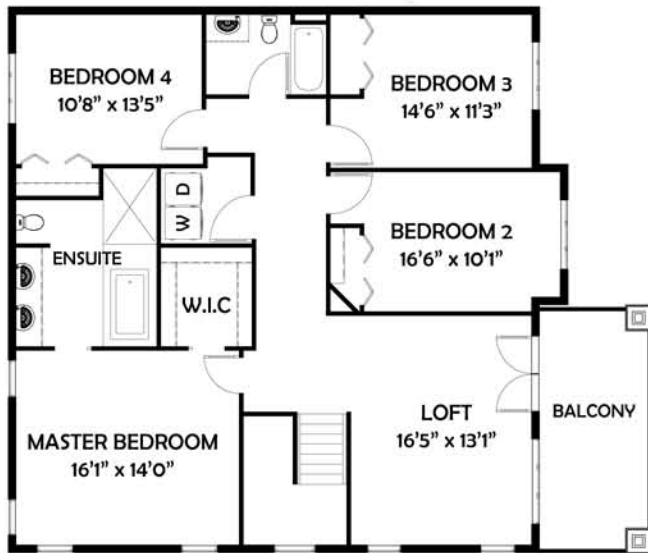


MAIN FLOOR 1118sqf



SECOND FLOOR 1502sqf



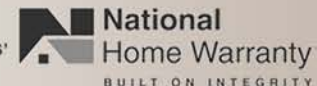
Two Storey, 2,628 SQ FT

4 bedroom - 2.5 bathroom - 2 car garage

- Stucco exterior with generous stonework on entry and front of garage
- Bold exterior with Hardie shakes, stonework and two garage doors
- Covered concrete front step with maintenance free metal railings
 - Open concept front entrance creates an inviting atmosphere
- Choice of Maple, Oak or White Thermofoil cabinetry throughout
 - Large kitchen includes island with overhang
 - Open concept great room, dining room and kitchen
 - All main floor ceilings are 9'
 - Private master bedroom with walk in closet and ensuite
- Spa ensuite with a drop-in tub and tile, double sinks and a separate shower
 - Steel beam in the basement reduce teleposts required



MANITOBA
HOME BUILDERS'
ASSOCIATION



New Haven Home